

9100 Series Small Parts

Rod Guide Components



Rod Guide Components

#	Part#	Description	Racer \$
1	E4-BOA-0000576	60mm Rod Guide	\$18.13
(or)	E4-BOA-0000574	46mm Rod Guide	\$14.93
2	E4-BOA-0000577	60mm Wiper Cap	\$11.45
(or)	E4-BOA-0000575	46mm Wiper Cap	\$10.24
3	194044	22mm Wiper	\$4.25
4	194432	22mm Rod Seal	\$4.15
5	412CCSS	Internal Socket Screw	\$0.63
6	E4-LB1-Z008A01	Bearing	\$1.65
7	1000406	60mm O-Ring	\$1.38
(or)	1000418	46mm O-Ring	\$0.72

Optional High Pressure Seal (not shown) (recommended for racing applications)

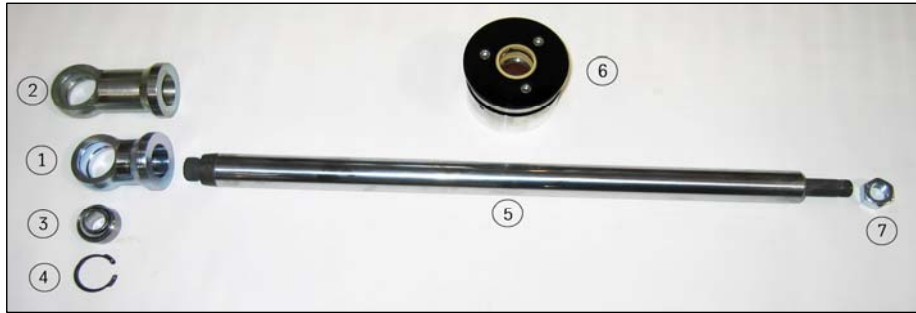
E4-B36-364	High Pressure Seal	\$7.78
568119	O-Ring, Viton for HP Seal	\$0.79

Complete Rod Guide Assemblies

B4-BOA-0000230	60mm Rod Guide, Complete	\$ 38.50
B4-BOA-0000229	46mm Rod Guide, Complete	\$ 33.00

*Complete assemblies do not include the optional high pressure seal

Piston Rod & Components



Piston Rod Assembly Components

#	Part#	Description	Racer \$
1	E4-BOA-0000186	22mm Rod End (Standard)	\$33
2	E4-BOA-0000173	22mm Rod End (Extended)	\$37.63
3	E4-BOA-0000476	Uniball, 1/2	\$14.60
4	E4-BOA-0000440	Heim Clip	\$0.47
5	E4-BOA-0000249	Piston Rod, 10"	\$ 58.00
	E4-KS0-Z014A02	Piston Rod, 12"	\$ 58.00
	E4-KS0-Z014A01	Piston Rod, 14"	\$ 58.00
	E4-KS0-Z014A00	Piston Rod, 17"	\$ 58.00
6	B4-BOA-0000230	Rod Guide, 60mm (Complete)	\$38.50
	B4-BOA-0000229	Rod Guide, 46mm (Complete)	\$33.00
7	E4-MU1-Z002A02	Rod Nut	\$0.77
Optional Shaft Bump (not shown)			
	E4-AP2-Z075A03	Shaft Bump, 22mm ID	\$ 5.50
<i>Please specify if this component is for a 46mm or 60mm shock</i>			

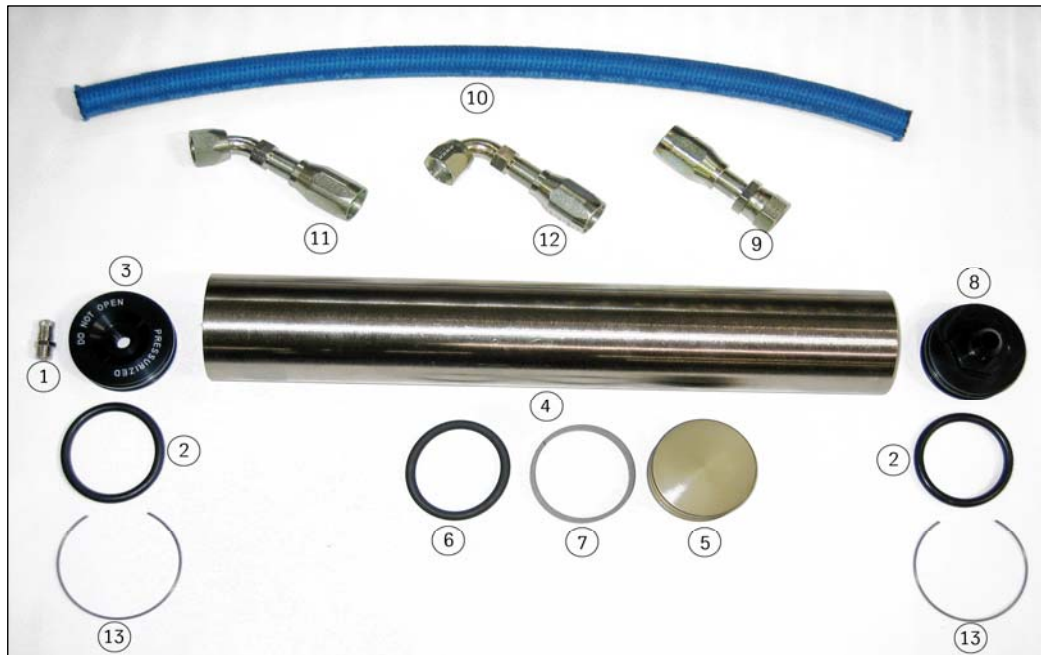
Bypass Components



Bypass Assembly Components

#	Part#	Description	Racer \$
1	E4-BOA-0000259	5/8 Bypass Housing (Weld-On)	\$29.78
(or)	E4-BOA-0000197	7/16 Bypass Housing (Weld-On)	\$19.65
2	1000415	O-Ring, Bypass Needle Housing	\$0.33
3	B4-BOA-0000919	Bypass Adjuster	\$43.47
4	1000405	Bypass Spring	\$2.94
5	E4-BOA-0000258	5/8 Bypass Piston	\$17.20
(or)	E4-BOA-0000198	7/16 Bypass Piston	\$15.63

Reservoir & Hose Components



Remote Reservoir Components

#	Part#	Description	Racer \$
1	91660192	Schrader Valve	\$3.14
2	1000406	O-Ring, 60mm	\$1.38
3	E4-BOA-0000039	Reservoir End Cap, 60mm	\$23.50
4	E4-BOA-0000544	Reservoir Tube, 60mm	\$43.79
	E4-BOA-0000543	"RCS" Reservoir Tube, 60mm	\$31.35
5	E4-BOA-0000103	Dividing Piston, 60mm	\$26.63
6	E4-BOA-0000450	O-Ring Dividing Piston, 60mm	\$7.78
7	194043	Piston Band, 60mm	\$12.50
8	E4-BOA-0000539	Reservoir End Cap w/ -8 fitting	\$21.95
9	4411-8S	Fitting -8 (Straight)	\$9.35
10	1000402	Hose, -8 (per mm) (Blue)	\$0.03
(or)	1000600	Hose, -8 (per mm) (Black)	\$0.21
11	190297-8S	Fitting -8 (45 degree)	\$16.28
12	190296-8S	Fitting -8 (90 degree)	\$16.89
13	E4-BOA-0000130	60mm Snap Ring (Internal)	\$1.24

9100 Series Parts Price List

Part#	Description	Racer \$
Seals / O-Rings / Wear bands / Bearings		
194432	Rod Seal, 22mm	\$ 4.15
194044	Wiper, 22mm	\$ 4.25
E4-B36-364	High Pressure Seal	\$ 7.78
568119	O-Ring, Viton for HP Seal	\$ 0.79
1000406	O-Ring, 60mm (Reservoir End Cap/Rod Guide External)	\$ 1.38
1000418	O-Ring, 46mm	\$ 0.72
E4-BOA-0000450	O-Ring, 60mm Dividing Piston (Viton)	\$ 7.78
194043	Piston Wear Band, 60mm Teflon	\$ 12.50
E4-KR2-X001A02	Piston Band, 46mm Teflon	\$ 1.65
18-637	Piston Band, 46mm Bronze Coated (For 2" Bypass Shock)	\$ 5.37
E4-BOA-0000763	Piston Band, 60mm Bronze Coated (new 7075 piston)	\$ 5.39
1000430	O-Ring, 60mm Square (backing o-ring for new 7075 Piston)	\$ 3.27
E4-LB1-Z008A01	Bearing, 22mm	\$ 1.65
E4-BOA-0000130	60mm Internal Snap Ring	\$ 1.24
Rod Guide Hard Parts		
E4-BOA-0000576	Rod Guide, 60mm	\$ 18.13
E4-BOA-0000574	Rod Guide, 46mm	\$ 14.93
E4-BOA-0000577	Wiper Cap, 60mm, Black	\$ 11.45
E4-BOA-0000575	Wiper Cap, 46mm, Black	\$ 10.24
412CCSS	Screw, Socket Head, Stainless	\$ 0.63
Pistons & Adapters (see page 7 for illustrations)		
E4-B46-20SNDT	Piston, 46mm Linear	\$ 24.40
E4-AK1-Z024A01	Piston, 46mm Digressive	\$ 39.20
E4-BOA-0000309	Piston, 60mm Linear	\$ 26.40
E4-BOA-0000582	Piston, New 7075 60mm Linear	\$ 46.73
E4-BOA-0000113	Aluminum Piston Adapter, 46mm to 60mm	\$ 33.33
E4-BOA-0000112	Bronze Piston Adapter, 46mm to 60mm	\$ 50.20
Piston Rods & Rod Nut		
E4-BOA-0000249	Piston Rod, 10" Travel	\$ 58.00
E4-KS0-Z014A02	Piston Rod, 12" Travel	\$ 58.00
E4-KS0-Z014A01	Piston Rod, 14" Travel	\$ 58.00
E4-KS0-Z014A00	Piston Rod, 17" Travel	\$ 58.00
E4-MU1-Z002A02	Rod Nut, 12mm x 1	\$ 0.77
Rod Ends		
E4-BOA-0000186	Rod End, Standard, 22mm	\$ 33.00
E4-BOA-0000173	Rod End, Extended, 22mm	\$ 37.63
E4-BOA-0000476	Uniball, 1/2"	\$ 14.60
E4-B46-610	15mm Uniball	\$ 20.85
E4-BOA-0000440	Heim Clip	\$ 0.47
E4-RO1-Z008C08	1/2 Heim Spacer	\$ 0.86
E4-B46-252E	15mm to 1/2 Step Down Spacer	\$ 3.58
E4-MSP-04723B1	15mm to 14mm Step Down Spacer	\$ 8.98
Tubes & Tops		
E4-BOA-0000222	Screw Top, 60mm, Standard	\$ 59.63
E4-BOA-0000353	Screw Top, 60mm, Clocked 90 Degree	\$ 59.63
E4-BOA-0000376	Screw Top, 60mm, No Fitting	\$ 59.63
E4-BOA-0000217	Screw Top, 46mm, Standard	\$ 53.35
E4-BOA-0000504	Screw Top, 46mm, Clocked 90 Degree	\$ 59.04
2021-6-8S	Adapter, -8 to 3/8 Pie Thread	\$ 2.35
E4-BOA-0000160	Top, Weld On, 60mm	\$ 36.08
E4-BOA-0000240	Tube, Smooth Body, 60mm 10" Threaded Top	\$ 49.72
E4-BOA-0000238	Tube, Smooth Body, 60mm 12" Threaded Top	\$ 64.85
E4-BOA-0000236	Tube, Smooth Body, 60mm, 14" Threaded Top	\$ 68.75
E4-BOA-0000234	Tube, Smooth Body, 60mm, 17" Threaded Top	\$ 68.75
E4-BOA-0000239	Tube, Threaded Body, 60mm 10" Threaded Top	\$ 81.95
E4-BOA-0000237	Tube, Threaded Body, 60mm 12" Threaded Top	\$ 81.95
E4-BOA-0000235	Tube, Threaded Body, 60mm 14" Threaded Top	\$ 86.85
E4-BOA-0000229	Tube, Threaded Body, 60mm 17" Threaded Top	\$ 86.85

Part#	Description	Racer \$
B4-RK0-Z04803	Tube, Smooth Body, 60mm, 17" Weld Top (<i>replace "Z" w / "A" for a unplated tube</i>)	<i>Inquire</i>
B4-RK7-Z010A03	Tube, Threaded Body, 60mm, 17" Weld Top	<i>Inquire</i>
E4-BOA-0000263	Tube, Smooth Body, 46mm 10" Threaded Top	\$ 38.17
E4-BOA-0000265	Tube, Smooth Body, 46mm 12" Threaded Top	\$ 39.33
E4-BOA-0000265	Tube, Smooth Body, 46mm, 14" Threaded Top	\$ 39.33
E4-BOA-0000269	Tube, Smooth Body, 46mm, 17" Threaded Top	\$ 42.08
E4-BOA-0000264	Tube, Threaded Body, 46mm 10" Threaded Top	\$ 75.63
E4-BOA-0000266	Tube, Threaded Body, 46mm 12" Threaded Top	\$ 75.65
E4-BOA-0000268	Tube, Threaded Body, 46mm 14" Threaded Top	\$ 79.48
E4-BOA-0000270	Tube, Threaded Body, 46mm 17" Threaded Top	\$ 79.48
Reservoir Hard Parts		
E4-BOA-0000544	Reservoir Tube, 15"	\$ 43.79
E4-BOA-0000543	Reservoir Tube, 12" Rock Crawler	\$ 31.35
E4-BOA-0000039	Reservoir End Cap	\$ 23.50
91660192	Schrader Valve	\$ 3.14
E4-BOA-0000539	Reservoir End Cap, -8 Fitting	\$ 21.95
E4-BOA-0000103	Dividing Piston, 60mm	\$ 26.63
25250129	High Pressure End Cap	\$ 1.50
Hose / Hose Fittings		
1000402	Hose, -8	\$ 7.48
4411-8S	Fitting, -8 Straight	\$ 9.35
190297-8S	Fitting, -8 45 Degree	\$ 16.28
190296-8S	Fitting, -8 90 Degree	\$ 16.89
Bypass Hardware		
190296-8S	Bypass Housing (7/16)	\$ 16.89
E4-BOA-0000259	Bypass Housing (5/8)	\$ 29.78
E4-BOA-0000198	Bypass Piston (7/16)	\$ 15.63
E4-BOA-0000258	Bypass Piston (5/8)	\$ 17.20
E4-BOA-0000200	Bypass Needle House	\$ 21.92
1000415	O-Ring Bypass House	\$ 0.33
E4-BOA-0000329	Bypass Needle	\$ 15.35
1000412	O-Ring Bypass Needle	\$ 0.28
E4-BOA-0000076	Tubing 7/16 (per ft.)	\$ 5.61
E4-BOA-0000260	Tubing 5/8 (per ft.)	\$ 10.92
1000405	Bypass Spring	\$ 2.94
25FNFJS	Nut, Bypass Needle	\$ 0.33
Spring Stops		
E4-BOA-0000338	3 5/8" Spring Stop	\$ 21.92
E4-BOA-0000183	3" Spring Stop	\$ 18.78
E4-BOA-0000339	2.5" Spring Stop	\$ 15.63
Spring Hats		
E4-BOA-0000163	3 5/8" Spring Hat	\$ 48.40
E4-BOA-0000177	3" Spring Hat	\$ 36.07
E4-BOA-0000346	2.5" Spring Hat	\$ 36.07
Spring Seats		
E4-BOA-0000187	3 5/8" Spring Seat	\$ 37.32
E4-BOA-0000175	3" Spring Seat	\$ 37.73
E4-B46-412	2.5" Spring Seat	\$ 14.30
Spring Seat Lock Rings		
E4-BOA-0000178	Lock Ring, 2.5" Body	\$ 34.50
E4-FT4-Z003A05	Lock Ring, 2" Body	\$ 9.27
Spring Sliders		
E4-BOA-0000340	2.5" ID Slider	\$ 25.07
E4-BOA-0000192	3" ID Slider	\$ 31.35
E4-BOA-0000195	3 5/8" Slider	\$ 34.50
Oil		
194131	Oil, Gallon	\$ 23.89

Valve Plates

Part#	Size*	Price (ea)
E4-FE1-Z009A02	15/.50	\$ 1.10
E4-FE1-Z009A76	15.5/.50	\$ 1.10
E4-FE1-Z009A43	16/.50	\$ 1.10
E4-FE1-Z009A73	16.5/.50	\$ 1.10
439779	17/.50	\$ 0.74
E4-FE1-Z009A72	17.5/.50	\$ 1.10
E4-FE1-Z009A00	18/.10	\$ 1.10
E4-FE1-Z009A01	18/.15	\$ 1.10
E4-FE1-Z009A08	18/.35	\$ 1.10
E4-FE1-Z009A07	18/.45	\$ 1.10
E4-FE1-Z009A34	18/.50	\$ 1.10
E4-FE1-Z009A49	19/.50	\$ 1.10
E4-FE1-Z009A96	19.5/.50	\$ 1.10
E4-FE1-Z009A05	20/.15	\$ 1.10
E4-FE1-Z009A03	20/.20	\$ 1.10
E4-FE1-Z009A39	20/.25	\$ 1.10
E4-FE1-Z009A50	20/.30	\$ 1.10
E4-FE1-Z009A40	20/.35	\$ 1.10
E4-FE1-Z009A32	20/.40	\$ 1.10
E4-FE1-Z009A51	20/.45	\$ 1.10
E4-FE1-Z009A34	20/.50	\$ 1.10
E4-FE1-Z009A82	22/.25	\$ 1.10
E4-FE1-Z009A11	22/.30	\$ 1.10
E4-FE1-Z009A38	22/.35	\$ 1.10
E4-FE1-Z009A83	22/.40	\$ 1.10
E4-FE1-Z009A47	22/.50	\$ 1.10
E4-FE1-Z009A53	24/.20	\$ 1.10
E4-FE1-Z009A54	24/.25	\$ 1.10
E4-FE1-Z009A41	24/.30	\$ 1.10
E4-FE1-Z009A55	24/.35	\$ 1.10
E4-FE1-Z009A56	24/.45	\$ 1.10
E4-FE1-Z009A35	24/.50	\$ 1.10
E4-FE1-Z009A16	26/.30	\$ 1.10
E4-FE1-Z009A17	26/.35	\$ 1.10
E4-FE1-Z009A36	26/.50	\$ 1.10
E4-FE1-Z009A18	28/.10	\$ 1.10
E4-FE1-Z009B00	28/.20	\$ 1.10
E4-FE1-Z009A19	28/.25	\$ 1.10
E4-FE1-Z009A21	28/.35	\$ 1.10
E4-FE1-Z009A22	28/.40	\$ 1.10
E4-FE1-Z009A23	28/.50	\$ 1.10
E4-FE1-Z009A42	30/.25	\$ 1.10
E4-FE1-Z009A57	30/.35	\$ 1.10
E4-FE1-Z009A37	30/.40	\$ 1.10
E4-FE1-Z009A87	30/.45	\$ 1.10
E4-FE1-Z009A30	30/.50	\$ 1.10
E4-FE1-Z009A48	32/.20	\$ 1.10
E4-FE1-Z009A31	32/.30	\$ 1.10
E4-FE1-Z009A29	32/.35	\$ 1.10
E4-FE1-Z009A45	32/.40	\$ 1.10
E4-FE1-Z009A24	35.8/.35	\$ 1.10
E4-FE1-Z009B14	35.8/.40	\$ 1.10
E4-FE1-Z009B20	35.8/.45	\$ 1.10
E4-FE1-Z009A60	36X.20	\$ 1.10
E4-FE1-Z009A61	36/.25	\$ 1.10
E4-FE1-Z009A63	36/.30	\$ 1.10
E4-FE1-Z009A64	36/.35	\$ 1.10
E4-FE1-Z009A65	36/.40	\$ 1.10
E4-FE1-Z009A67	36/.50	\$ 1.10

Part#	Size*	Price (ea)
E4-FE1-Z009A68	36/.60	\$ 1.10
E4-FE1-Z009A75	36/.70	\$ 1.10
E4-FE1-Z009B05	37.4/.25	\$ 1.10
E4-FE1-Z009B06	37.4/.30	\$ 1.10
E4-FE1-Z009A67	37.4/.35	\$ 1.10
E4-FE1-Z009B24	37.4/.40	\$ 1.10
E4-FE1-Z009B10	37.4/.45	\$ 1.10
E4-FE1-Z009B60	42/.25	\$ 1.10
E4-FE1-Z005A31	42/.30	\$ 1.10
E4-FE1-Z005A23	42/.35	\$ 1.10
E4-FE1-Z009B62	42/.40	\$ 1.10
E4-FE1-Z009B63	42/.45	\$ 1.10
E4-FE1-Z009B64	42/.50	\$ 1.10
E4-FE1-Z009B65	42/.60	\$ 1.10
E4-FE1-Z009B66	44/.25	\$ 1.10
E4-FE1-Z009B67	44/.35	\$ 1.10
E4-FE1-Z009B68	44/.40	\$ 1.10
E4-FE1-Z009B70	44/.45	\$ 1.10
E4-FE1-Z009B71	44/.50	\$ 1.10
E4-FE1-Z009B72	44/.60	\$ 1.10
E4-FE1-Z009B73	46.8/.25	\$ 1.10
E4-FE1-Z009B74	46.8/.35	\$ 1.10
E4-FE1-Z009B75	46.8/.40	\$ 1.10
E4-FE1-Z009B76	46.8/.45	\$ 1.10
E4-FE1-Z009B77	46.8/.50	\$ 1.10
E4-FE1-Z009B78	46.8/.60	\$ 1.10
E4-FE1-Z009B79	48.2/.25	\$ 1.10
E4-FE1-Z009B80	48.2/.35	\$ 1.10
E4-FE1-Z009B81	48.2/.40	\$ 1.10
E4-FE1-Z009B83	48.2/.50	\$ 1.10
Digressive Bypass Plates		
E4-B46-742B2	2 notch	\$ 1.10
E4-B46-742C2	2 notch	\$ 1.10
E4-B46-743A2	4 notch	\$ 1.10
E4-B46-743B2	4 notch	\$ 1.10
E4-B46-743C2	4 notch	\$ 1.10
E4-B46-744A2	8 notch	\$ 1.10
E4-B46-744B2	8 notch	\$ 1.10
E4-B46-744C2	8 notch	\$ 1.10

* Size shown is Width / Thickness measured in millimeters. All shims have a 12mm I.D.

Piston Illustrations

Current Designs



60mm 7075 Aluminum Linear Piston

Application: All current 60mm Dampers

Part	Description
E4-BOA-0000582	60mm 7075 Piston
E4-BOA-0000763	Wear Band
1000430	O-Ring, Square



U37 46mm Linear Piston

Application: 46mm Coilover and Smooth Body

Part	Description
E4-B46-20SNDT	U37 46mm Piston, Linear
E4-KR2-X001A02	Wear Band



46mm Digressive Piston

Application: Rock Crawler Dampers

Part	Description
E4-AK1-Z024A01	Piston, 46mm Digressive
E4-KR2-X001A02	Piston Band, 46mm Teflon



U37 46mm Linear Piston W/ Bronze Backed Wear Band

Application: 46mm Bypass Dampers

Part	Description
E4-B46-20SNDT	U37 46mm Piston, Linear
18-637	Piston Band, 46mm Bronze

Previous Designs



U37 46mm Piston w/ 60mm Adapter

Application: 60mm Coilover or Smooth Body

Part	Description
E4-B46-20SNDT	U37 46mm Piston, Linear
E4-BOA-0000113	Aluminum Piston Adapter
194043	Piston Wear Band, 60mm



U37 46mm Piston w/ Bronze Adapter

Application: 60mm Bypass Dampers

Part	Description
E4-B46-20SNDT	U37 46mm Piston, Linear
E4-BOA-0000112	Bronze Piston Adapter



60mm Linear Piston

Application: 60mm Coilover and Smooth Body

Part	Description
E4-BOA-0000309	Piston, 60mm Linear
194043	Piston Wear Band, 60mm

Bilstein Off-Road Racing Department - (800) 537-1085

